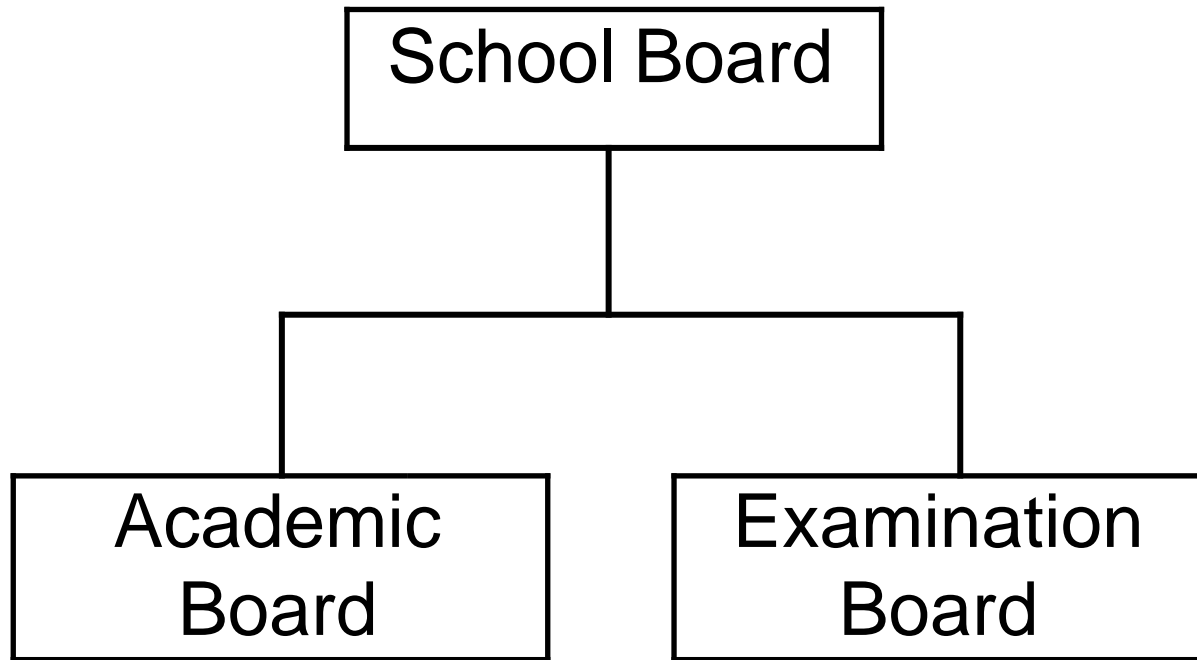


Waseda Shibuya Senior High School in Singapore Organizational Structure



School Manager: Masaki TAMADA (Secretary General and School Board Member)

School Board Members
(as of 01/12/2018)

Members of Academic Board and Examination Board
(as of 01/12/2018)

Dr. Hironori KASAHARA (Chairman)	Senior Executive Vice President for Research and IT Promotion, Waseda University Professor, Faculty of Science and Engineering, Waseda University Managing Director of Waseda Shibuya Senior High School in Singapore	Dr. Hironori KASAHARA	School Board Member
Ph.D.Takashi ASO	Vice President for International Public Relations, Equality and Diversity Promotion Professor, Faculty of International Research and Education, Waseda University	Ph.D.Takashi ASO	School Board Member
Mr.Shoji KAI	Director of Financial Affairs Division, Waseda University	Mr.Shoji KAI	School Board Member
Mr.Tetsuo TAMURA	President, Shibuya Kyoiku Gakuen Principal, Shibuya Junior & Senior High School Principal, Shibuya Makuhari Junior & Senior High School	Mr.Tetsuo TAMURA	School Board Member
Mr.Toshiaki TAMURA	Vice Principal, Shibuya Makuhari Junior & Senior High School	Mr.Toshiaki TAMURA	School Board Member
Prof. Waichiro IWASHI	Principal, Waseda Shibuya Senior High School in Singapore Professor, Faculty of Law, Waseda University	Prof. Waichiro IWASHI	School Board Member
Ms Itsuko TAKAGIWA	Vice Principal, Waseda Shibuya Senior High School in Singapore Vice Principal, Shibuya Junior & Senior High School	Ms Itsuko TAKAGIWA	School Board Member
Mr.Masaki TAMADA	Secretary General, Waseda Shibuya Senior High School in Singapore Manager, International Affairs & Academic Affairs Division of Waseda University	Mr.Masaki TAMADA	School Board Member
Mr.Tetsunori KUWAHARA	Head of Teacher, Waseda Shibuya Senior High School in Singapore	Mr.Tetsunori KUWAHARA	School Board Member
Mr.Katsunori KOMOHARA	Administrative Manager of Affiliated Schools of Office, Academic Affairs Division of Waseda University	Mr.Katsunori KOMOHARA	School Board Member